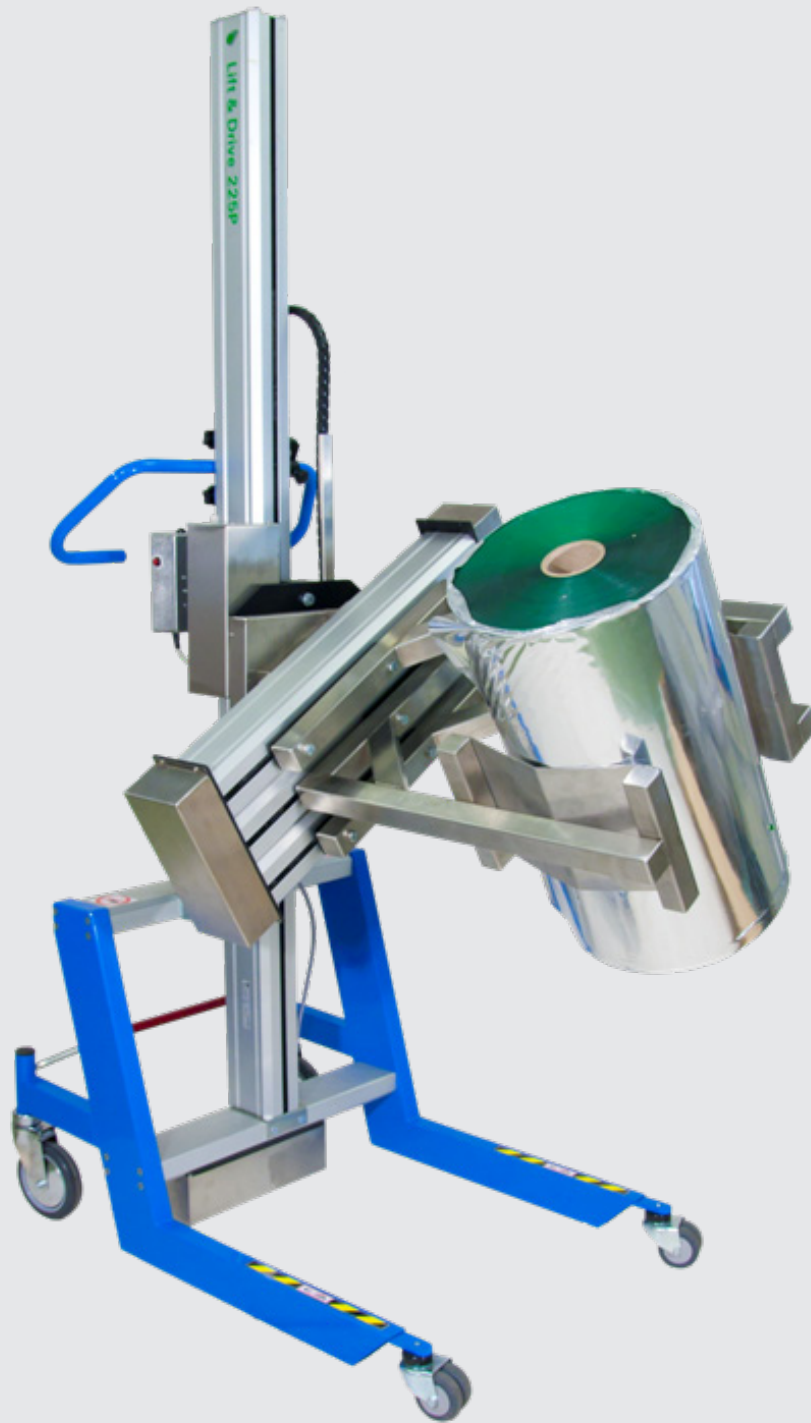


Lift&Drive



Lift&Drive

175-225P

 PRONOMIC

Lift&Drive 175-225P

Lifters based on modular design,
make it suit your requirements

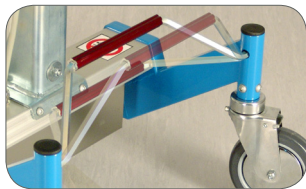
Our selfmanufactured lift trolley 175 and 225P handles loads up to 225 kg.

Your requirements determine the appearance of the final lifter. The trolley are flexible and equipped with a directional lock on the rear wheels, this make it maneuverable and quick and easy to turn sideways.

The trolley are very simple to use and easy to handle, and it require only very little maintenance.

The column are equipped with a screw drive and are available in different heights.

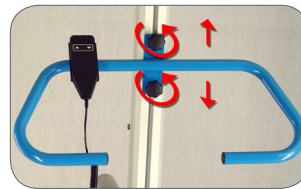
To ensure maximal safety the trolley possess a built-in release function, which serves as protection from crushing injuries and prevents the trolley from tipping over.



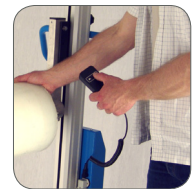
Central brake and directional lock on the rear wheels



Screw drive with coaster function to prevent crushing injuries and the trolley tipping over



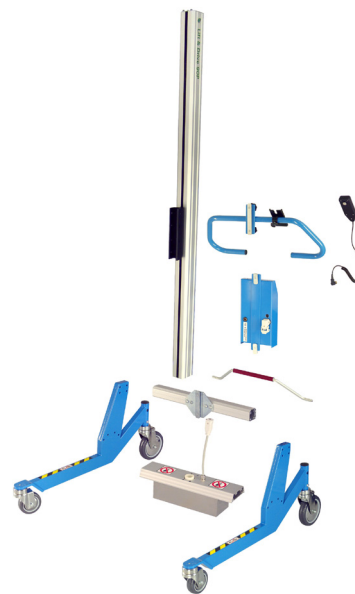
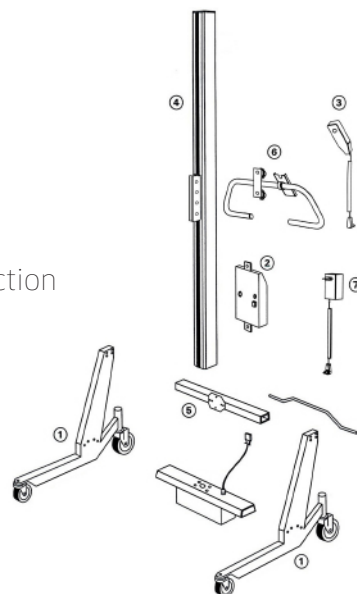
Height-adjustable handlebar



Detachable manual control box

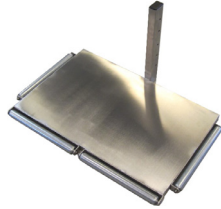
Module-based design - your requirements a g environment determine the final tool

- 1 Pair of legs
- 2 Electronic unit
- 3 Control box
- 4 Column
- 5 Intermediate section
- 6 Handlebar
- 7 Charger



Accessories - standard or customized

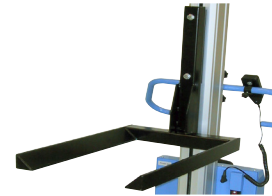
Select an accessory you require from our broad range of standard tools: prong for roll handling, roll platform, lifting forks, as well as our Squeeze&Turn modules; weighing scales and counting scales, etc. We also manufacture customized tools in accordance to your specifications.



Platform with edge rolls



Prong for roll handling



Fork



Roll platform, with front-feed



Roll platform, with side-feed



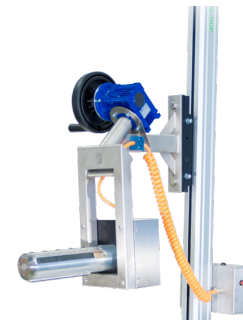
Scales



Squeeze&Turn

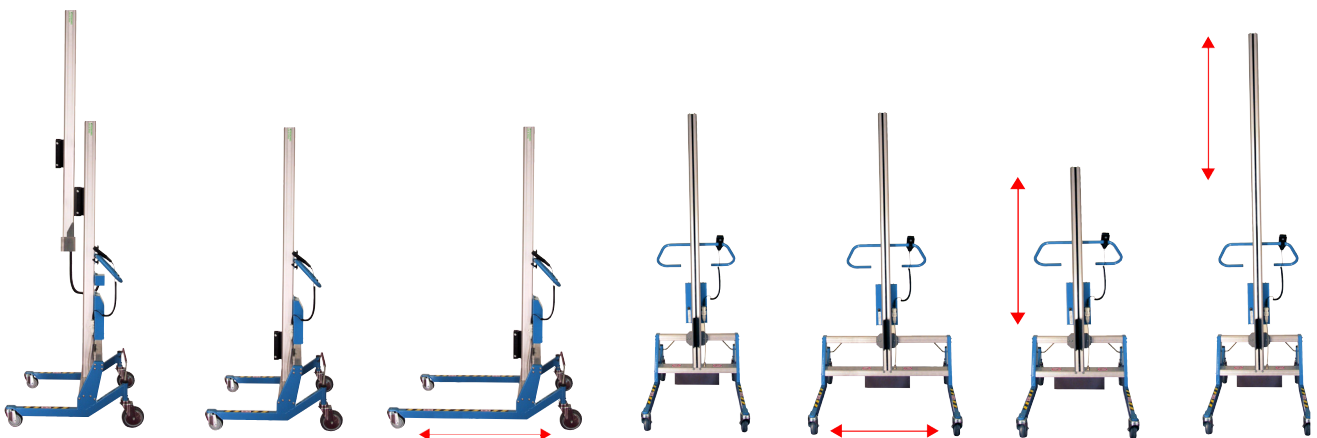


Expand&Turn - pneumatic expander, turning operated electrically



Expand&Turn - pneumatic expander, turning operated manually

Flexibility - hoose mast height, and width & length of legs



Technical Specifications

Technical Specifications for Lift&Drive, 175-225P

Column	Overall height, standard	Overall height, low built	Length of stroke 175P	Length of stroke 225P
standard	2000	1950	1375	1275
+500	2500	2450	1875	1775
+1000	3000	2950	2375	2275
Minimum lifting height (with std. platform)		106 mm		
Max lifting height (with a +1000 column)		2481 mm		
Stroke length		1275, 1375, 1775, 1875, 2275, 2375 mm		
Total width (with std.legs)		576 mm to 1300 mm		
Length (without platform) standard, low built		984, 959 mm		
Width, standard		576 to 1300 mm		
Laoadplatform (LxB), standard		600 x 550		
Wheel diameter (front/rear) standard, low-built		100/150, 60/100 mm		
Maximum load 175P, 225P		175 kg, 225 kg		
Dead weight (with std. platform)		ca 78 kg		
Battery voltage		24 V		
Battery capacity		17 Ah		
Charging voltage		230VAC/50Hz or 115VAC/60Hz		
Lifting speed with a full load - 175P		4 m/minut		
Lifting speed with a full load - 225P		3,2 m/minut		
Material		Chassi in powder-coated steel and stainless steel		

SMEYERS – TRU NV/sa

Treft 61/3

B – 1853 Strombeek – Bever

☎ +32 (0)2-461 21 09

www.pronomic-lift.be

✉ +32 (0)2-461 21 44

info@pronomic-lift.be



PRONOMIC AB

E-post: info@pronomic.se

Hemsida: www.pronomic.se

 **PRONOMIC**